



SCOTT NESLAGE

HEIGHT 190 - 6' 2.5"

CHEST 99 - 39"

WAIST 83 - 32"

HIPS 94 - 37"

SHOES 44 - 10 1/2

HAIR CASTANO SCURO - DARK BROWN

EYES MARRONI - BROWN











VERSACE
That's right, no medusas. Versace makes power suits too. And fantastic ones at that. With a spiffy pocket square in place and some bling on the cuffs, who dares block thy path?

Wool and mohair suit, cotton and polyamide shirt and silk tie.

ESQ 03•14 149



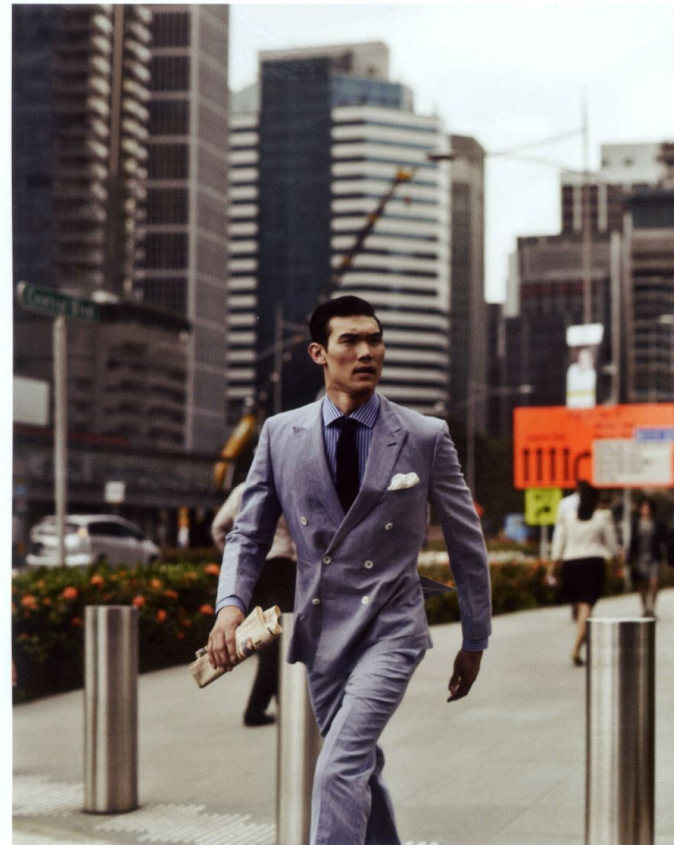
RUSH HOUR

DOUBLE THE PACE IN THE CITY AS ESQUIRE SINGAPORE TAKES A LOOK AT WHAT THE SEASON HAS TO OFFER FOR THE URBANE MAN.

PHOTOGRAPHS BY IVANHO HARLIM AND SHYSILIA NOVITA
STYLING AND WORDS BY DOREEN TAN

CANALI
Once again exhibiting the finest of Italian craftsmanship, Canali injects texture in this collection using stripes and prints. Trousers are pleated yet slim, and luxurious jackets feature a more relaxed look with patch pockets. Whoever said formal wear had to be boring?

Wool and silk jacket, cotton shirt, cotton trousers, silk tie and silk pocket square.



BOSS
BOSS means business, but we already knew that. A stately double-breasted suit can get you places, but the wearer is instantly more approachable when an otherwise severe outfit is finished with a light, no-fuss cotton knit tie.

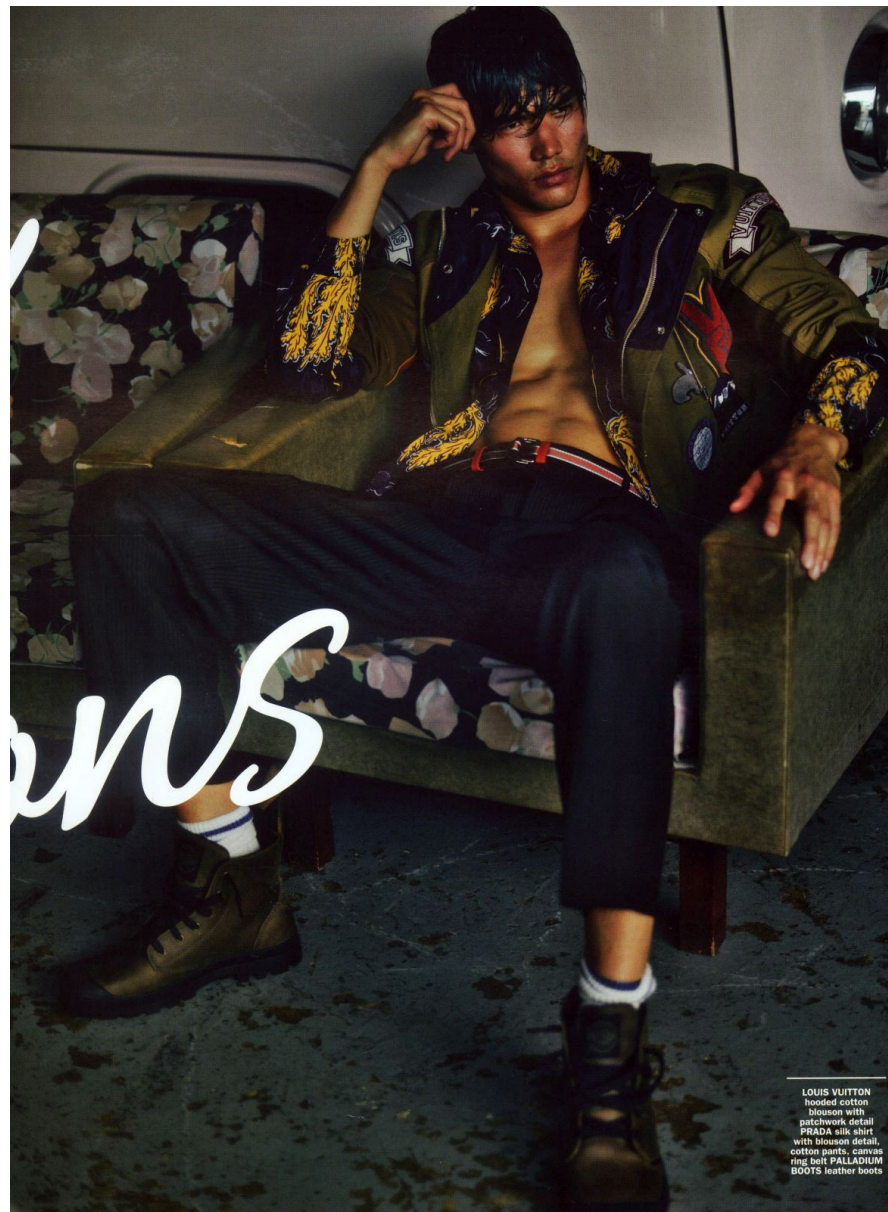
Linen and cotton suit, cotton shirt, and cotton knit tie.



DSQUARED2
Dean and Dan's creations aren't what we would consider office-wear per se. But there is no denying how Dsquared2 manages to balance the classic and the cool quite impeccably. What's more, we are creatives, aren't we? Dress code? What dress code?

Cotton jacket, cotton jeans and linen and leather briefcase.

ESQ 03•14 153



LOUIS VUITTON
hooded cotton blouson with patchwork detail
PRADA silk shirt with blouson detail, cotton pants, canvas ring belt **PALLADIUM** BOOTS leather boots

