



DOUGLAS JOSEPH

HEIGHT 187 - 6' 1.5"

CHEST 97 - 38"

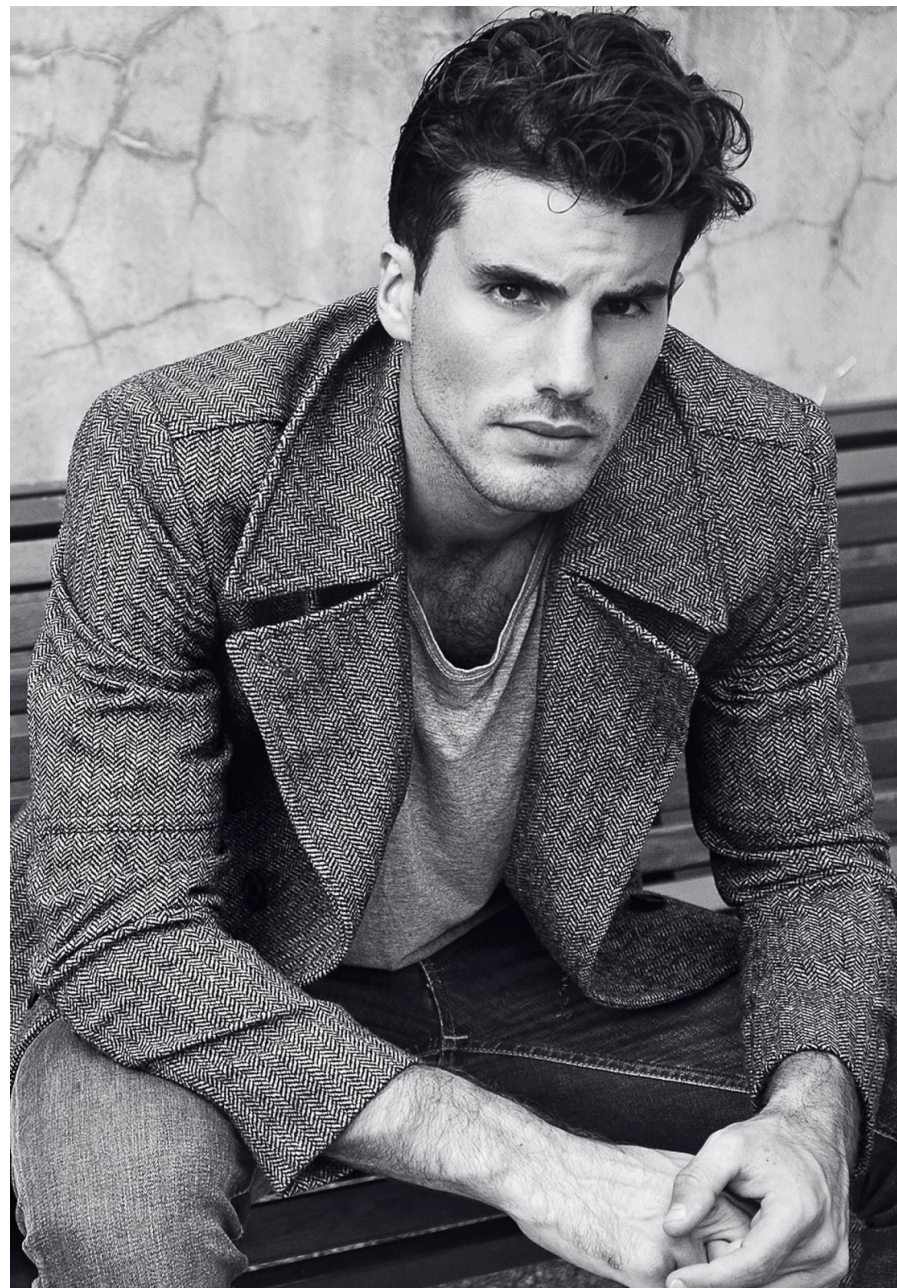
WAIST 81 - 32"

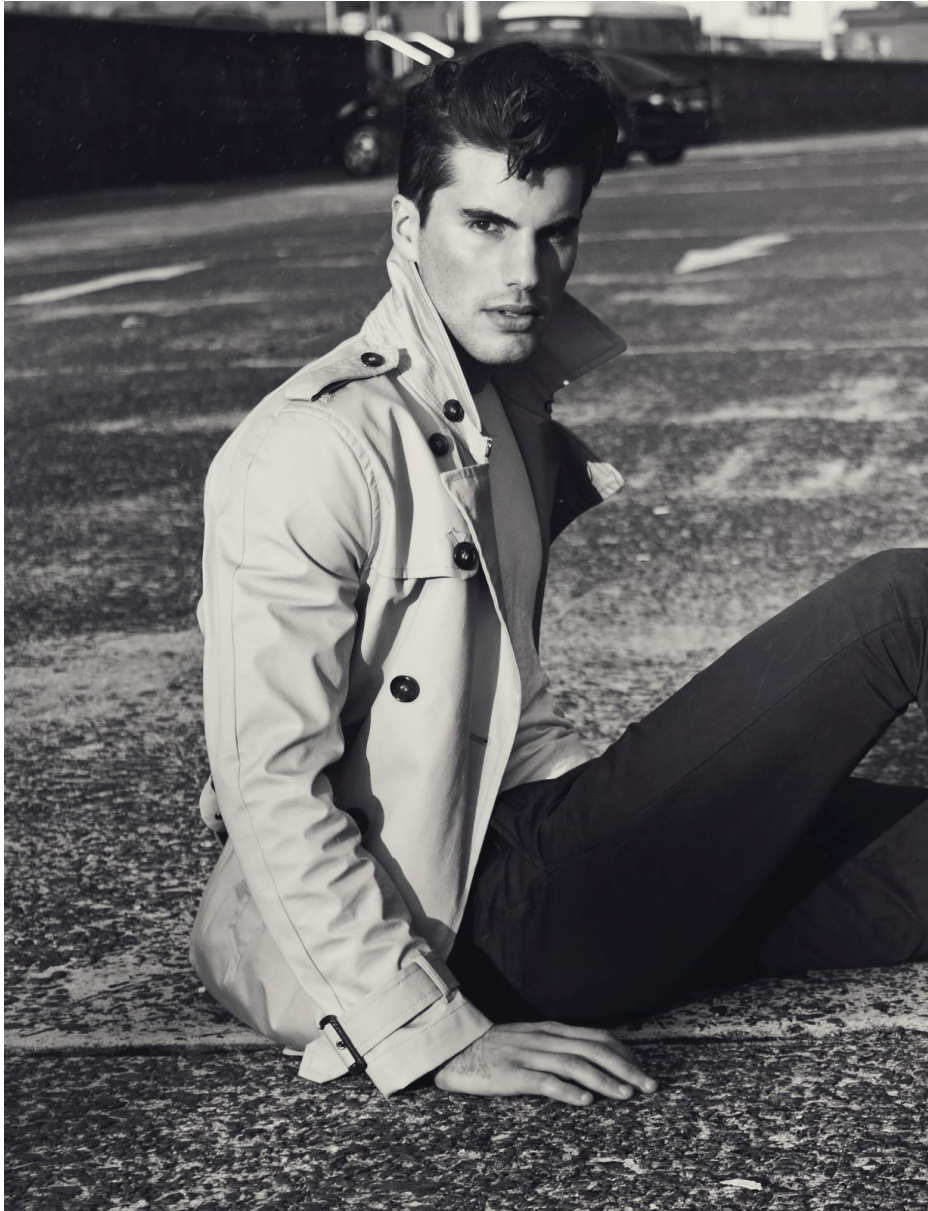
HIPS 94 - 37"

SHOES 44 - 10 1/2

HAIR CASTANO SCURO - DARK BROWN

EYES MARRONI - BROWN















THE MODERN GENTLEMAN

Stripes, checks and the final finishing flourishes,
your groom will cut a dashing figure
in these sharp looks. Good day indeed, Sir.

PHOTOGRAPHY: JASON TERENCE

FASHION DIRECTION: ROSIE MCKAY

2011 bridgetobe.com.au

SABA 'Colin' suit jacket, \$490, pants, \$220, and 'Anthony' shirt, \$175.
Baron Fedora hat, \$120.
Tommy Lewin tie, \$100.95,
tie pin, \$44.95, and
pocket square, \$34.95.
Rado 'Centrix Evolution'
watch, \$2275. Thomas
Saba signet ring, \$440.























Douglas "Dougie" Joseph
wears Reiss jeans, £350
Morgan wears an Eres bikini,
£420, from Sylvia Rhodes
Lingerie & Swimwear

MARKUS LUTHE



